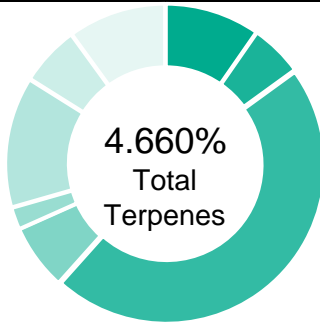
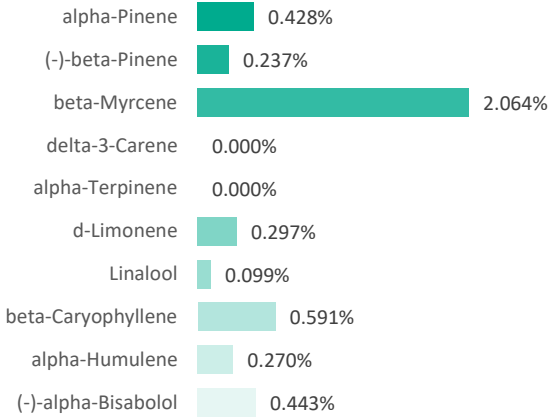


**Suver Haze Rosin**

<b>Batch ID:</b>	N/A	<b>Test ID:</b>	6038023.0031
<b>Reported:</b>	26-Apr-2019	<b>Method:</b>	TM10
<b>Type:</b>	Concentrate		
<b>Test:</b>	Terpenes		

**TERPENE PROFILE**


Compound	%(w/w)	mg/g
(-)-alpha-Bisabolol	0.443	4.43
Camphene	0.013	0.13
delta-3-Carene	0.000	0
beta-Caryophyllene	0.591	5.91
(-)-Caryophyllene Oxide	0.045	0.45
p-Cymene	0.000	0
Eucalyptol	0.000	0
Geraniol	0.000	0
alpha-Humulene	0.270	2.7
(-)-Isopulegol	0.000	0
d-Limonene	0.297	2.97
Linalool	0.099	0.99
beta-Myrcene	2.064	20.64
cis-Nerolidol	0.000	0
trans-Nerolidol	0.000	0
Ocimene	0.005	0.05
beta-Ocimene	0.168	1.68
alpha-Pinene	0.428	4.28
(-)-beta-Pinene	0.237	2.37
alpha-Terpinene	0.000	0
gamma-Terpinene	0.000	0
Terpinolene	0.000	0
	<b>4.660%</b>	<b>46.60</b>

**PREDOMINANT TERPENES**


## NOTES:

**FINAL APPROVAL**

 <b>Greg Zimpfer</b> 26-Apr-2019 10:07 AM	 <b>David Green</b> 26-Apr-2019 11:37 AM
--	--

PREPARED BY / DATE

APPROVED BY / DATE

Testing results are based solely upon the sample submitted to Botanacor Laboratories, LLC. Botanacor Laboratories, LLC warrants that all analytical work is conducted professionally in accordance with all applicable standard laboratory practices using validated methods. Data was generated using an unbroken chain of comparison to NIST traceable Reference Standards and Certified Reference Materials. This report may not be reproduced, except in full, without the written approval of Botanacor Laboratories, LLC. ISO/IEC 17025:2005 Accredited A2LA Certificate Number 4329.02